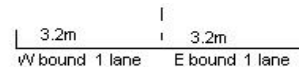


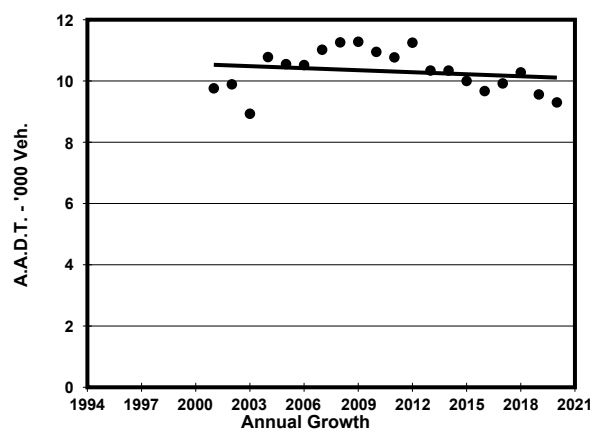
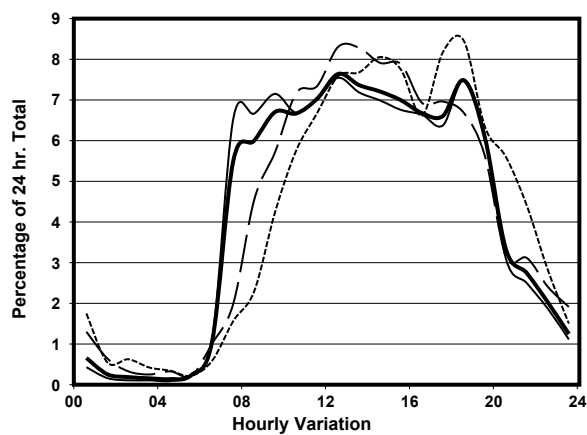
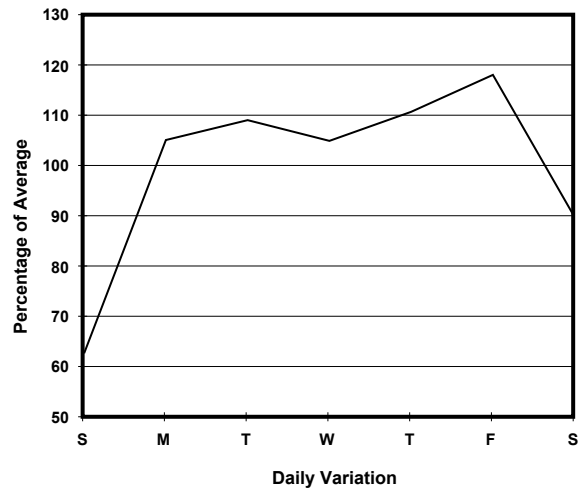
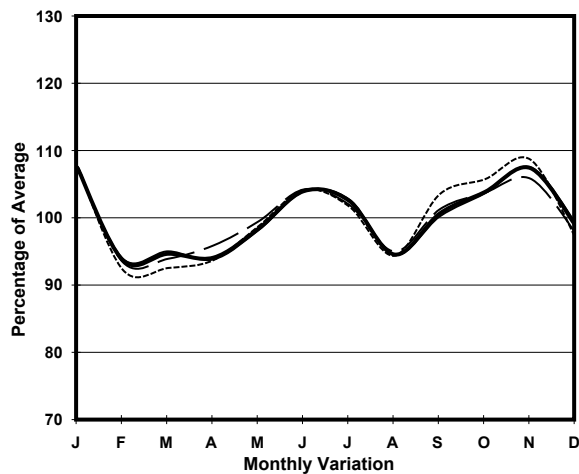
YEAR 2020

LINK KENNEDY RD (from MACDONNELL RD to QUEEN'S RD E)

COVERAGE (B) STATION 2213
ROAD NETWORK MAJOR
ROAD TYPE DISTRICT DISTRIBUTOR



1. TRAFFIC FLOW VARIATION AND GROWTH



— All day — Mon. - Fri. Sat. - - - - Sun.

2. TRAFFIC CHARACTERISTICS (BY DIRECTION)

Parameter	All - Day	Mon. - Fri.	Sat.	Sun.
EAST BOUND				
A.A.D.T.	6320	7120	5320	4170
R 12 / 24 - %	83.3	84.4	80.8	76.4
R 16 / 24 - %	96.5	97.1	94.2	94.5
AM Peak Hour	0900-1000	0900-1000	0900-1000	0900-1000
One-way flow at AM peak hour	430	510	330	170
T - % (AM)	-	-	-	-
PM Peak Hour	1800-1900	1800-1900	1700-1800	1800-1900
One-way flow at PM peak hour	470	520	370	370
T - % (PM)	-	0.6	-	-
Prop.of commercial vehicles - 16 hr.	-	2.3	-	-
WEST BOUND				
A.A.D.T.	2980	3260	3180	1780
R 12 / 24 - %	79	80	77.9	71.2
R 16 / 24 - %	95.1	95.6	93.6	92.8
AM Peak Hour	0900-1000	0900-1000	0900-1000	0900-1000
One-way flow at AM peak hour	200	240	160	90
T - % (AM)	-	3.1	-	-
PM Peak Hour	1800-1900	1800-1900	1600-1700	1700-1800
One-way flow at PM peak hour	230	250	270	150
T - % (PM)	-	-	-	-
Prop.of commercial vehicles - 16 hr.	-	2.6	-	-

3. OTHER INFORMATION AND COMMENT

4. Vehicle classification and occupancy - Monday to Friday

Time		Class of vehicle									
		Motor	Private	Taxi	Private	PLB	Goods veh.		Non	Fr. Bus	
		Cycle	Car		LB		Light	M & H	Fr. Bus	SD	DD
0700-0800	Pro	2.9	30.8	37.5	9.6	2.9	4.8	0.0	11.5	0.0	0.0
	Ocp	1.0	1.6	1.8	6.4	7.0	1.6	0.0	13.9	0.0	0.0
0800-0900	Pro	1.4	73.2	12.0	5.6	2.8	3.5	0.0	1.4	0.0	0.0
	Ocp	1.0	1.4	2.4	7.9	9.5	1.6	0.0	13.5	0.0	0.0
0900-1000	Pro	3.3	57.9	27.3	0.5	2.2	7.7	0.0	1.1	0.0	0.0
	Ocp	1.0	1.6	2.0	10.0	10.8	1.7	0.0	2.5	0.0	0.0
1000-1100	Pro	2.2	61.2	23.0	0.7	2.9	9.4	0.0	0.7	0.0	0.0
	Ocp	1.0	1.6	1.7	1.0	8.3	2.0	0.0	20.0	0.0	0.0
1100-1200	Pro	1.2	57.3	21.6	3.5	1.8	11.7	0.6	2.3	0.0	0.0
	Ocp	1.0	1.6	2.0	1.5	6.0	1.8	1.0	24.5	0.0	0.0
1200-1300 Peak hour	Pro	5.1	51.9	19.0	4.4	1.3	12.7	1.9	3.8	0.0	0.0
	Ocp	1.0	1.7	1.7	4.1	15.0	1.6	2.0	3.5	0.0	0.0
1300-1400	Pro	4.3	52.2	30.4	0.0	1.5	11.6	0.0	0.0	0.0	0.0
	Ocp	1.2	1.6	1.7	0.0	10.5	1.5	0.0	0.0	0.0	0.0
1400-1500	Pro	2.0	56.3	25.8	2.0	2.0	10.6	0.0	1.3	0.0	0.0
	Ocp	1.3	1.4	1.5	5.7	12.7	1.6	0.0	18.0	0.0	0.0
1500-1600	Pro	2.8	52.5	27.1	2.8	1.7	7.2	1.1	5.0	0.0	0.0
	Ocp	1.0	1.7	1.7	5.8	12.7	1.7	2.0	15.7	0.0	0.0
1600-1700	Pro	3.6	51.3	29.5	4.7	1.0	7.3	0.0	2.6	0.0	0.0
	Ocp	1.0	1.6	1.8	4.9	9.0	1.8	0.0	6.2	0.0	0.0
1700-1800	Pro	1.2	67.1	22.0	1.7	1.2	4.6	1.2	1.2	0.0	0.0
	Ocp	1.0	1.7	1.5	3.3	9.5	1.5	2.5	2.0	0.0	0.0
1800-1900	Pro	4.1	63.9	27.4	0.0	1.8	2.3	0.0	0.5	0.0	0.0
	Ocp	1.0	1.5	1.8	0.0	10.0	1.2	0.0	1.0	0.0	0.0
1900-2000	Pro	5.6	64.6	27.8	0.0	1.4	0.7	0.0	0.0	0.0	0.0
	Ocp	1.0	1.3	1.9	0.0	5.5	1.0	0.0	0.0	0.0	0.0
2000-2100	Pro	6.7	59.6	28.1	0.0	2.2	1.1	2.2	0.0	0.0	0.0
	Ocp	1.0	1.4	2.1	0.0	5.0	2.0	2.0	0.0	0.0	0.0
2100-2200	Pro	8.6	55.2	31.0	0.0	3.4	1.7	0.0	0.0	0.0	0.0
	Ocp	1.0	1.7	1.7	0.0	4.0	1.0	0.0	0.0	0.0	0.0
2200-2300	Pro	7.4	51.9	33.3	0.0	5.6	1.9	0.0	0.0	0.0	0.0
	Ocp	1.0	1.5	1.8	0.0	5.3	3.0	0.0	0.0	0.0	0.0
16 hours	Pro	3.4	57.5	25.7	2.3	2.0	6.7	0.4	2.0	0.0	0.0
	Ocp	1.0	1.6	1.8	5.2	8.9	1.7	2.0	12.0	0.0	0.0

Legend: Pro. Proportion of vehicles in % (Sum may not add up to 100% due to figure rounding)*

Ocp. Average occupancy of vehicles including both driver and passengers*

M&H Medium and Heavy

* All traffic data are collected from combined bounds